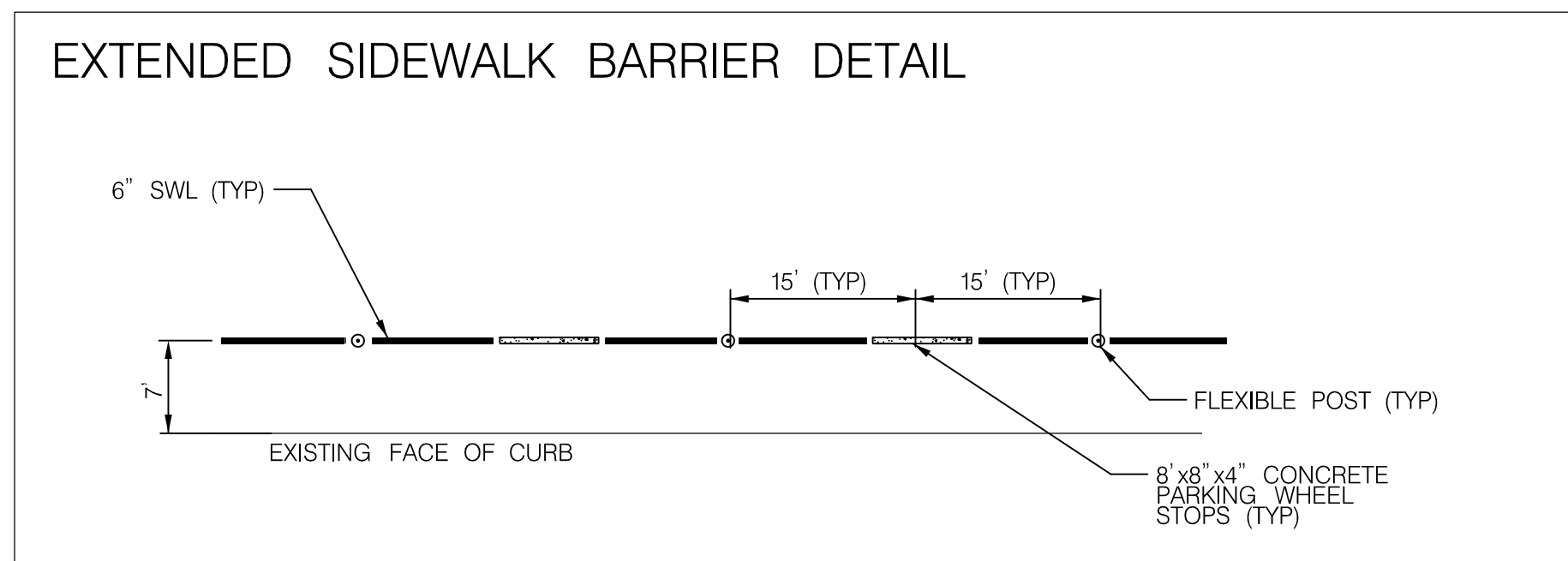
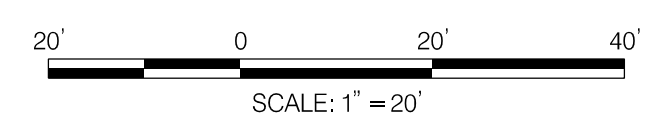
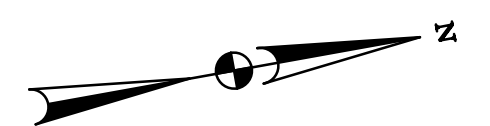


MATCH LINE - PM 02



SIGNING & PAVEMENT MARKINGS LEGEND

- (A) 4" WHITE THERMOPLASTIC PAVEMENT MARKINGS
- (B) 6" WHITE THERMOPLASTIC PAVEMENT MARKINGS
- (C) 12" WHITE THERMOPLASTIC PAVEMENT MARKINGS
- (D) 24" WHITE THERMOPLASTIC PAVEMENT MARKINGS
- FLEXPOST
- ▬ 8' X 8' X 4" CONCRETE PARKING WHEEL STOP (TYP)



NO.	DESCRIPTION	NAME	DATE

D.C. DEPARTMENT OF TRANSPORTATION
PLANNING, AND SUSTAINABILITY DIVISION
ACTIVE TRANSPORTATION PROGRAM

SIDEWALK EXTENSION
CONCEPT DESIGN

BELT ROAD NW BETWEEN
FESSENDEN ST NW AND
DAVENPORT ST NW

PROJECT ENG. DAG

DESIGNED BY BLT

CHECKED BY DLL

DRAWN BY BLT

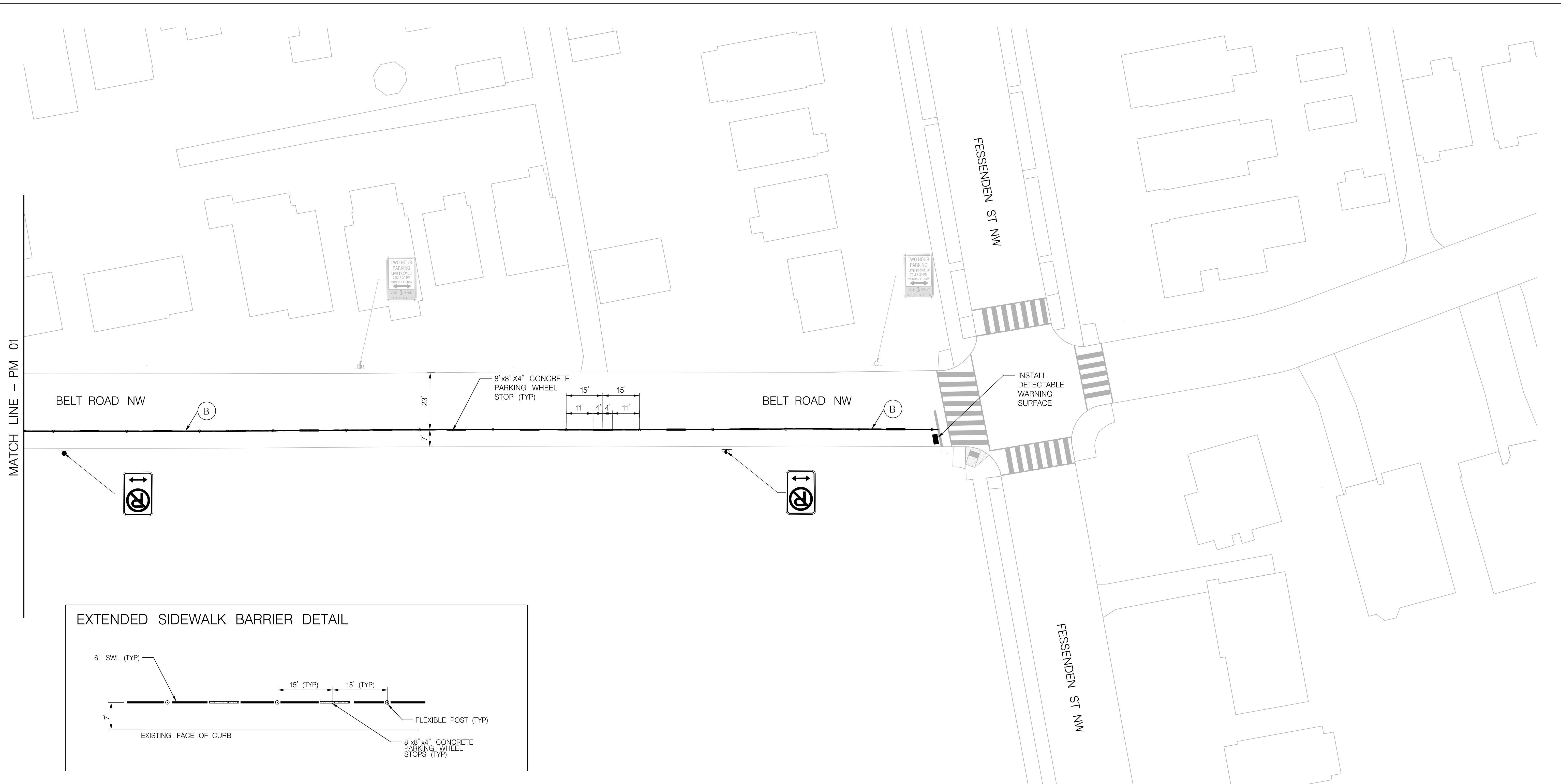
PROJECT MGR. DLL

DIVISION CHIEF

DATE SEPTEMBER 2020

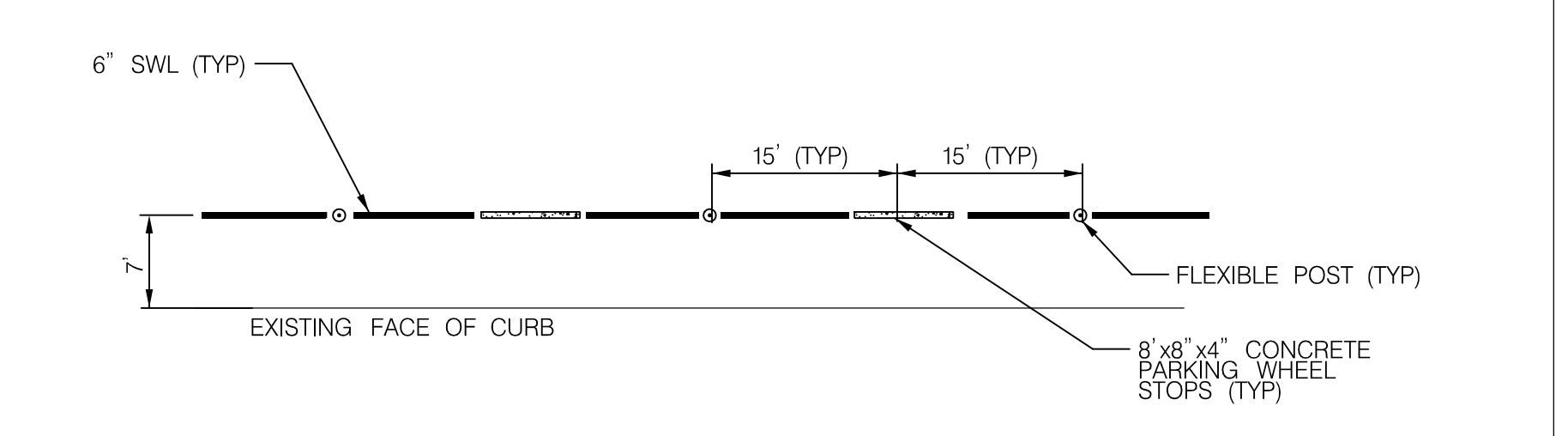
FILE

SHEET 1 OF 2



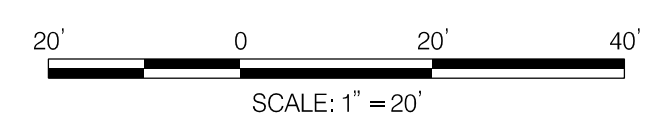
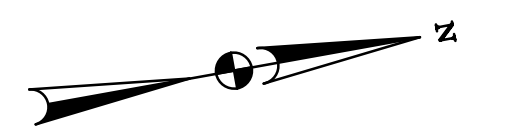
MATCH LINE - PM 01

EXTENDED SIDEWALK BARRIER DETAIL



SIGNING & PAVEMENT MARKINGS LEGEND

- (A) 4" WHITE THERMOPLASTIC PAVEMENT MARKINGS
- (B) 6" WHITE THERMOPLASTIC PAVEMENT MARKINGS
- (C) 12" WHITE THERMOPLASTIC PAVEMENT MARKINGS
- (C) 24" WHITE THERMOPLASTIC PAVEMENT MARKINGS
- FLEXPOST
- ▬ 8'x8'x4" CONCRETE PARKING WHEEL STOP (TYP)



NO.	DESCRIPTION	NAME	DATE

D.C. DEPARTMENT OF TRANSPORTATION PLANNING, AND SUSTAINABILITY DIVISION ACTIVE TRANSPORTATION PROGRAM	
SIDEWALK EXTENSION CONCEPT DESIGN	PROJECT ENG. <u> </u> DAG DESIGNED BY <u> </u> BLT CHECKED BY <u> </u> DLL DRAWN BY <u> </u> BLT PROJECT MGR. <u> </u> DLL
BELT ROAD NW BETWEEN FESSENDEN ST NW AND DAVENPORT ST NW	DIVISION CHIEF DATE <u> </u> SEPTEMBER 2020 <u> </u> FILE <u> </u> SHEET 2 OF 2